

# Pipe Fixing Accessories



## Snap-in Open Pipe Clips Single & Double

This contemporary range of pipe clips for both single and double pipe arrangements has added retention through the stiffened external rib, which also assists installers by leading the pipe into the clip aperture. **Material: White Polypropylene**



Part No.	Product Description	Pack Qty
5-15W	Open clip for 15mm pipe	100
5-22W	Open clip for 22mm pipe	100
5-28W	Open clip for 28mm pipe	100
5-D15W	Double open clip for 15mm pipe	100
5-D22W	Double open clip for 22mm pipe	100



## Hinged Pipe Clips Single & Double

This range of single and double clips incorporates a special hinge that reduces the risk of stress cracking. The clips are provided with a central fixing hole and can be assembled together using a unique locking mechanism. The double version can be used to support the 15 and 22mm pipe cover. **Material: White Polypropylene**



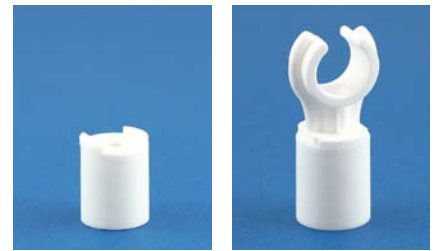
Part No.	Product Description	Pack Qty
9-15W	Hinged clip for 15mm pipe	100
9-22W	Hinged clip for 22mm pipe	100
9-28W	Hinged clip for 28mm pipe	100
9-D15W	Double hinged clip for 15mm pipe	100
9-D22W	Double hinged clip for 22mm pipe	100
9-D28W	Double hinged clip for 28mm pipe	100



## Pipe Clip Spacer

Spacers designed to meet the requirements of the Water Bye-laws. All spacers provide an additional stand-off distance of 22mm from the wall, providing generous space for pipe insulation. **Material: White Polypropylene**

Part No.	Product Description	Pack Qty
8-16W	Spacer for 15mm and 22mm single and double open clips	100
8-17W	Spacer for 28mm single and double open clip and all single and double hinged clips	100



## Double Swivel Clips

The Ellis double swivel type clips are designed to be screwed loosely to the wall prior to the installation of the pipe. Once the pipe is in place (with the lid parallel to the pipe run) the lid is swivelled through 90° and the screw tightened up to fix the pipes permanently. **Material: Natural Polypropylene**

Part No.	Product Description	Pack Qty
942DN	Double Swivel Clip for 2 x 15mm pipes	250
944DN	Double Swivel Clip for 1 x 15mm & 1 x 22mm pipes	200
946DN	Double Swivel Clip for 2 x 22mm pipes	200



## Heavy Duty Pipe Clips

A Heavy Duty range of Open clips with a unique patented ribbing on the inside of the clip to facilitate pipe expansion and contraction. **Material: White Polypropylene**

Part No.	Product Description	Pack Qty
962W	15mm Heavy Duty Pipe Clip	500
964W	22mm Heavy Duty Pipe Clip	500
966W	28mm Heavy Duty Pipe Clip	500



## Side Entry Pipe Clips

A snap in open type clip with a side fixing facility. **Material: Natural Polypropylene**

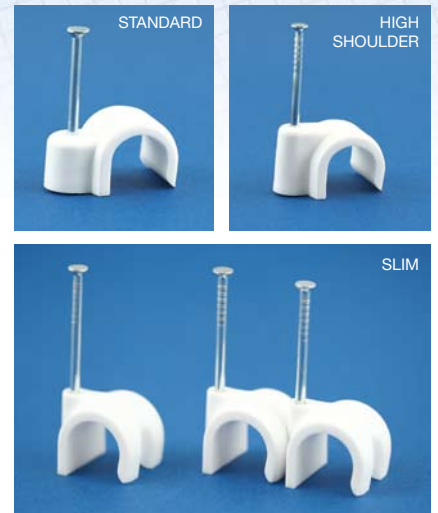
Part No.	Product Description	Pack Qty
92-2SN	15mm Side Entry Pipe Clip	1000
92-4SN	22mm Side Entry Pipe Clip	1000



# Nail Clips

This robust design ensures that the clip provides excellent pipe retention. The product is available in three styles - standard (N10 Series), high shoulder (N11 Series) and slim nail clip (N12 series).  
Material: White Polypropylene

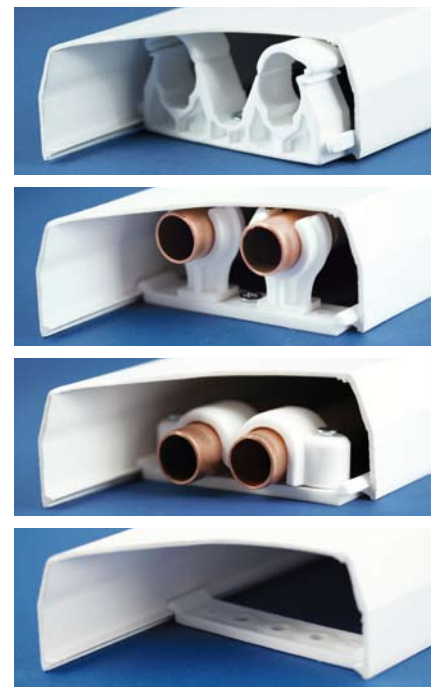
Standard	Part No.	Product Description	Pack Qty
	N10-08W	Nail pipe clip for 8mm pipe	100
	N10-10W	Nail pipe clip for 10/12mm pipe	100
	N10-15W	Nail pipe clip for 15mm pipe	100
	N10-22W	Nail pipe clip for 22mm pipe	100
	N10-28W	Nail pipe clip for 28mm pipe	100
High Shoulder	Part No.	Product Description	Pack Qty
	N11-15W	High shoulder nail pipe clip for 15mm pipe	100
	N11-22W	High shoulder nail pipe clip for 22mm pipe	100
Slim	Part No.	Product Description	Pack Qty
	N12-15W	Slim nail pipe clip for 15mm pipe	100
	N12-22W	Slim nail pipe clip for 22mm pipe	100



# Pipe Cover

Ellis Patents pipe cover provides a quality finish to plumbing installations with a shouldered design and excellent surface finish. For use with Ellis Patents double hinged pipe clip or pipe cover bracket or a combination of the pipe cover bracket fixed down with open or nail clips  
Material: White PVC

Part No.	Product Description	W (mm)	H (mm)	Pack Qty
PC15/2500	Cover to suit 2 x 15mm pipes	76	34	10 x 2.5m
PC22/2500	Cover to suit 2 x 22mm pipes	93	41	10 x 2.5m
PC15/3000	Cover to suit 2 x 15mm pipes	76	34	10 x 3m
PC22/3000	Cover to suit 2 x 22mm pipes	93	41	10 x 3m



# Pipe Cover Bracket

The pipe cover bracket can be used to fix the above pipe cover to existing plumbing installations and can fit around pipe clips that have been previously installed. The bracket can be slid underneath existing pipework, fixed to the wall and then the cover mounted.  
Material: White Polypropylene

Part No.	Product Description	Pack Qty
9-PB15W	Pipe cover bracket for 9 - 15PC pipe cover	100
9-PB22W	Pipe cover bracket for 9 - 22PC pipe cover	100



# Pipe Cover Accessories

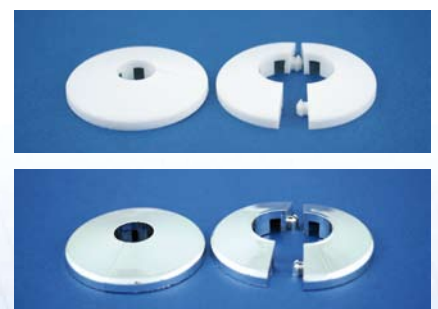
A range of corners etc. to complement the 15mm pipe cover. These items are moulded in white polypropylene and are fixed with the use of white or clear silicone sealant.  
Material: White Polypropylene

Part No.	Product Description	Pack Qty	Image
9-15IC	Internal Corner	2	1.
9-15EC	External Corner	2	2.
9-15FC	Flat Corner	2	3.
9-15SA	Straight Adaptor	2	4.
9-15SE	Stop End	2	5.
9-15TP	Tee Piece	2	6.

# Pipe Collars

Supplied in two halves that neatly snap together to provide a finish to pipes going through walls and floors. Available in White Polypropylene and Chrome Plated Polypropylene.

Part No.	Product Description	Pack Qty
9-C15W	15mm Pipe Collar - White Polypropylene	25
9-C22W	22mm Pipe Collar - White Polypropylene	25
9-C15S	15mm Pipe Collar - Chrome Plated Polypropylene	25
9-C22S	22mm Pipe Collar - Chrome Plated Polypropylene	25



# Snap-on Saddle Clips

A range of Two Hole Fixing Saddle Clips for securing various types of pipe to flat surfaces. The shoulders of the clip hold the pipe away from the mounting surface and also provide the snap on facility.

Material:

- B - Black Polypropylene
- N - Natural Polypropylene

Part No.	Dia mm	Fix Hole mm	Copper	Steel/uPVC	Plastic Waste	Plastic nom. o/d	Pack Qty
90-M095	9.5	3.75					100
90-M120	12.0	3.75				12	100
90-01	12.7	3.75		1/4"			500
90-02	15.0	3.75	15mm		1/2"	16	500
90-03	17.5	4.0		3/8"			500
90-075	19.0	4.0				20	500
90-04	23.0	4.0	22mm	1/2"	3/4"		500
90-04.1	24.2	4.0					500
90-05	25.4	4.0				25	500
90-06	27.5	5.0	28mm	3/4"	1"		500
90-07	31.7	5.0				32	200
90-08	34.0	5.0	35mm	1"	1 1/4"		200
90-09	38.1	5.0					100
90-10	42.0	5.0	42mm		1 1/2"	40	200
90-11	42.6	5.0		1 1/4"			200
90-12	44.4	5.0					100
90-13	48.7	5.0		1 1/2"		50	200
90-14	53.9	5.0	54mm		2"		100
90-143	55.0	6.0					100
90-15	60.5	6.0		2"		63	100
90-19	75.0	7.5		2 1/2"		75	100
90-24*	88.9	10.0		3"		90	25



\* This item is supplied with a baseplate

# Spacer for Snap-on Saddle Clips

The spacer is suitable for use with all saddle clips (except 90 - 24) and provides additional separation of the cable or pipe from the mounting surface of approximately 12.5mm.

Material: B - Black Polypropylene, N - Natural Polypropylene

Part No.	Material	Pack Qty
90-S	B, N	1000



# Soil Pipe Clip

The soil pipe clip is used to securely attach 4"/110mm plastic waste and vent pipe to buildings. The clip is both strong and flexible.

Material: B - Black Polypropylene, G - Grey Polypropylene

Part No.	Material	Pipe Size	Pack Qty
87-110	B, G	110mm	25



## Packaging

We are able to offer bespoke packaging including customised printed bags

## Material Colour

All our pipe clips, dependent on volume requirement, can be supplied in alternative colours

## Specials

All our pipe clips are manufactured in the UK. We have in-house design and tool manufacturing capabilities and will consider producing non-standard products.



Opportunity through Innovation

Ellis Patents Ltd.  
High Street, Rillington  
Malton, North Yorkshire  
YO17 8LA  
UK

Tel: (0)1944 758395  
Fax: (0)1944 758808

Email: [sales@ellispatents.co.uk](mailto:sales@ellispatents.co.uk)  
Website: [www.ellispatents.co.uk](http://www.ellispatents.co.uk)